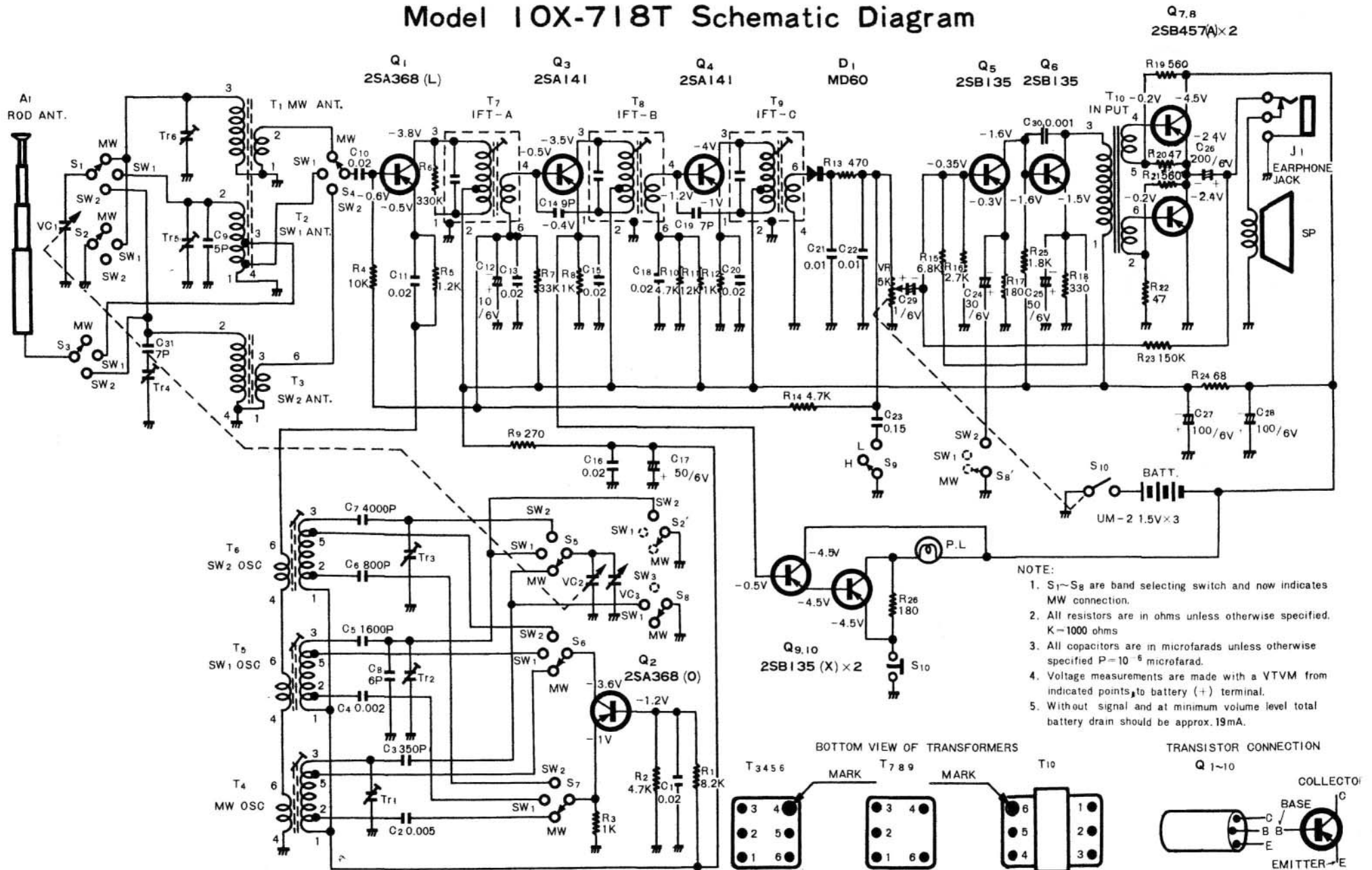


# Model 10X-718T Schematic Diagram



- NOTE:
1. S<sub>1</sub>-S<sub>8</sub> are band selecting switch and now indicates MW connection.
  2. All resistors are in ohms unless otherwise specified. K=1000 ohms
  3. All capacitors are in microfarads unless otherwise specified P=10<sup>-6</sup> microfarad.
  4. Voltage measurements are made with a VTVM from indicated points to battery (+) terminal.
  5. Without signal and at minimum volume level total battery drain should be approx. 19mA.

