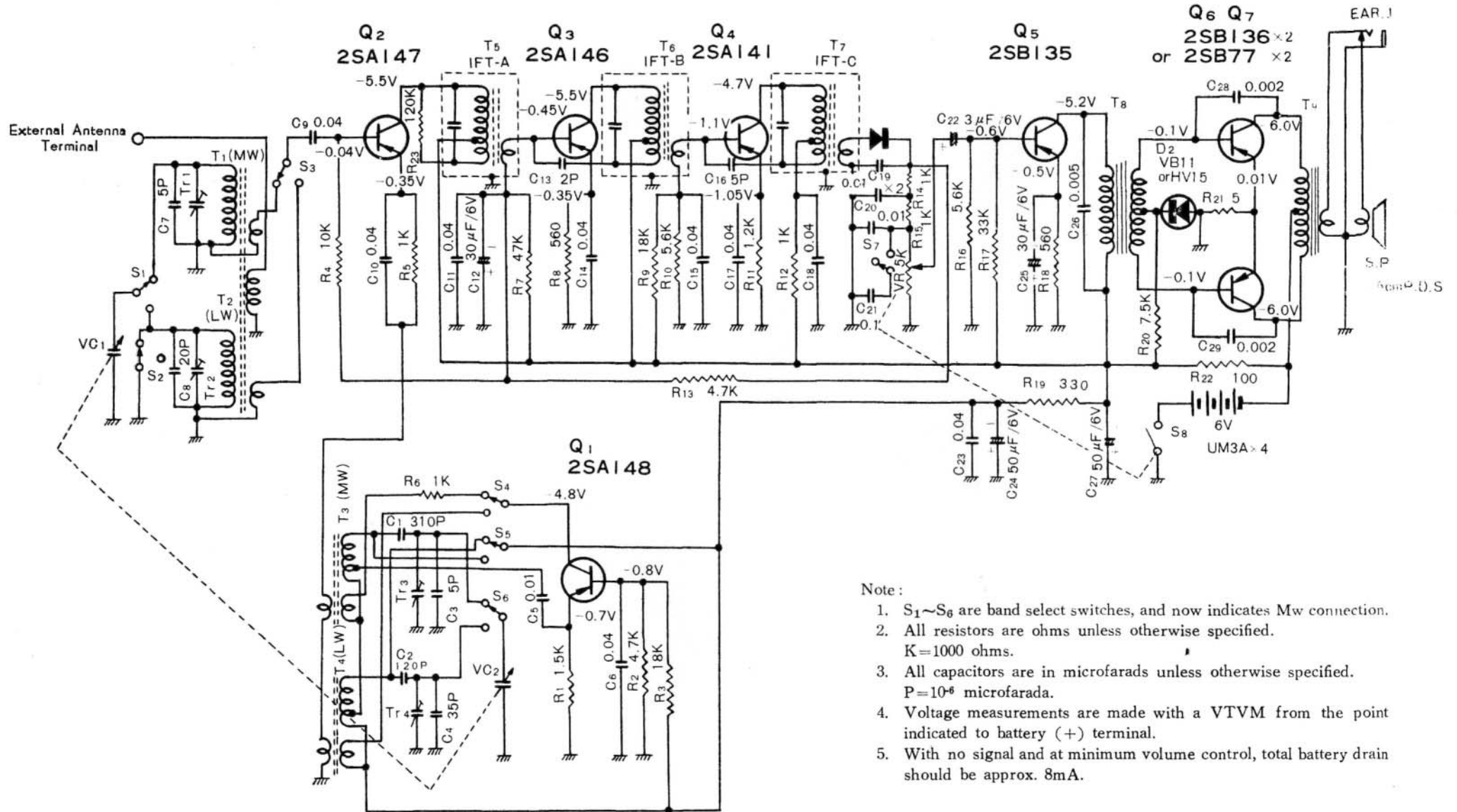


MODEL 7X-588L SCHEMATIC DIAGRAM



Note:

1. $S_1 \sim S_6$ are band select switches, and now indicates Mw connection.
2. All resistors are ohms unless otherwise specified.
K=1000 ohms.
3. All capacitors are in microfarads unless otherwise specified.
P= 10^{-6} microfarada.
4. Voltage measurements are made with a VTVM from the point indicated to battery (+) terminal.
5. With no signal and at minimum volume control, total battery drain should be approx. 8mA.