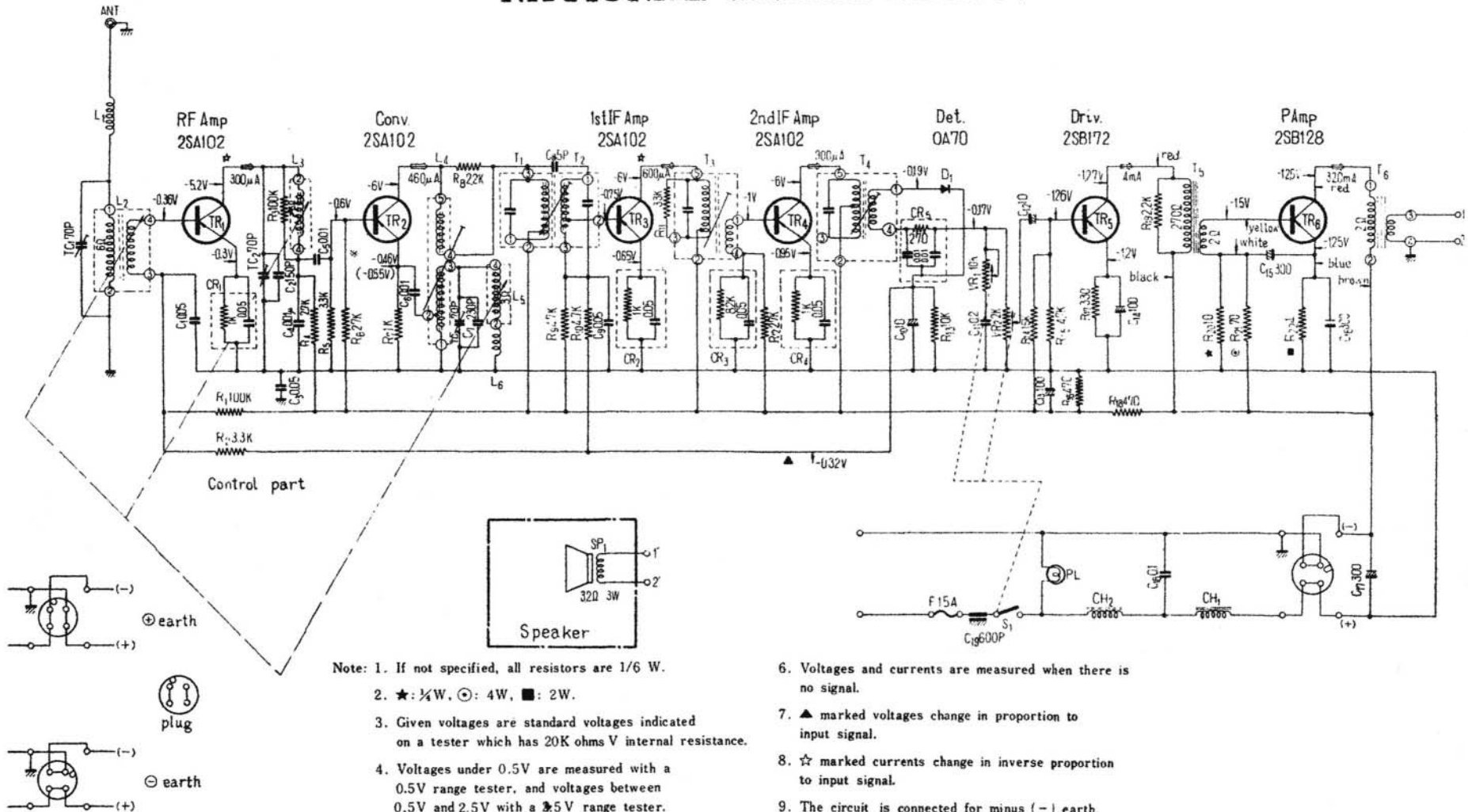


# NATIONAL MODEL AT369.



Note: 1. If not specified, all resistors are 1/6 W.

2. ★: 1/4W, ⊙: 4W, ■: 2W.

3. Given voltages are standard voltages indicated on a tester which has 20K ohms V internal resistance.

4. Voltages under 0.5V are measured with a 0.5V range tester, and voltages between 0.5V and 2.5V with a 2.5V range tester.

5. Voltage is - 0.46V at 1605KC receiving frequency. And - 0.55V at 535KC.

6. Voltages and currents are measured when there is no signal.

7. ▲ marked voltages change in proportion to input signal.

8. ☆ marked currents change in inverse proportion to input signal.

9. The circuit is connected for minus (-) earth.