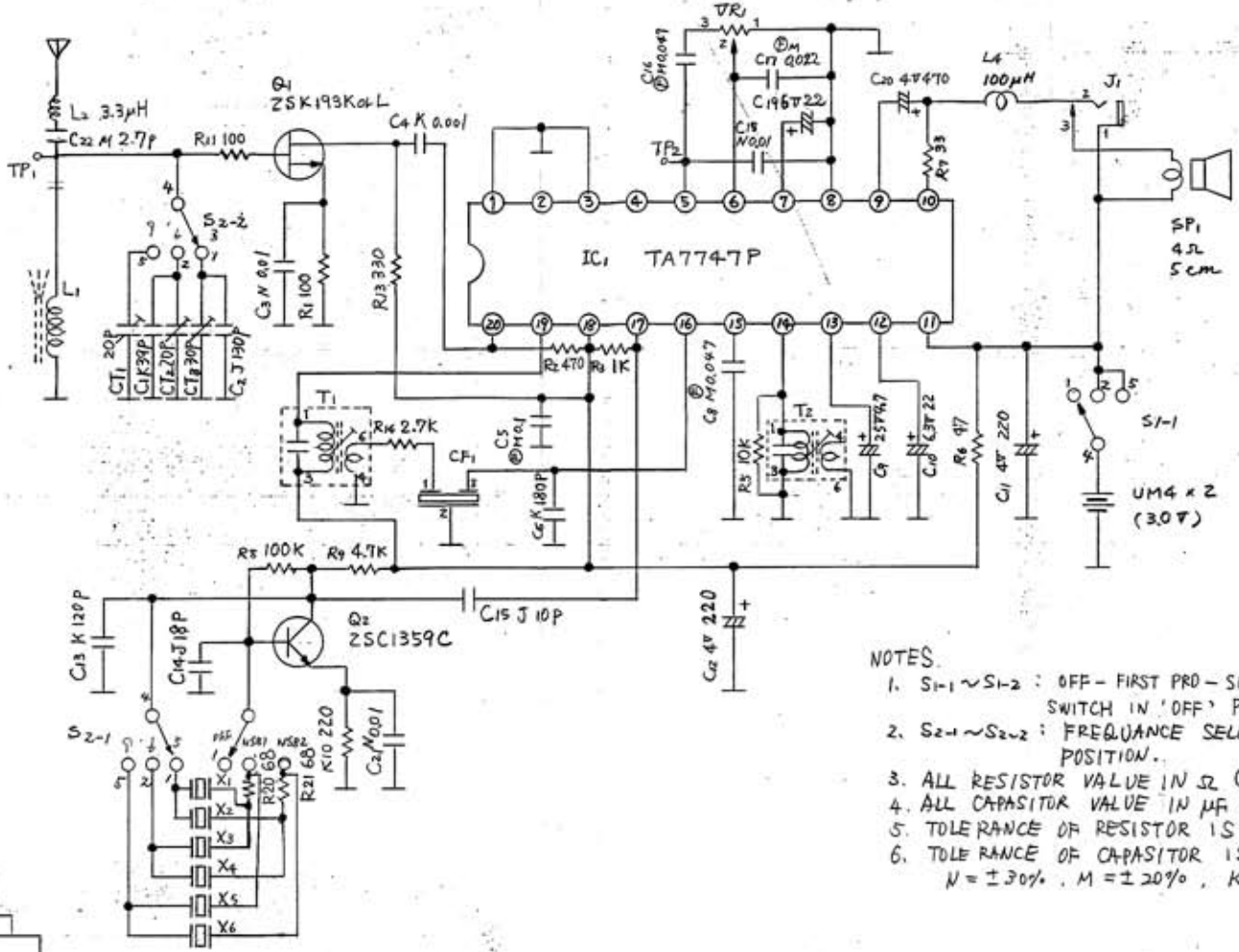
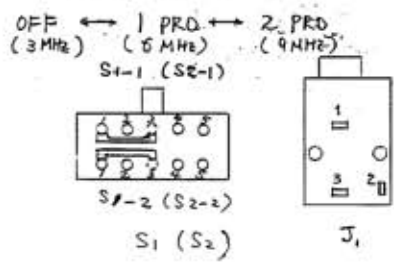
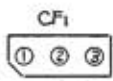
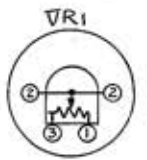
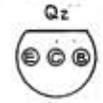
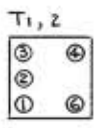
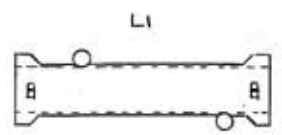


Sym	Date	Revision	A	B	C	D	E	F	Changed From	Signed	Checked	Approved

C	22	1	13	14	2	3	4	15	5	6	7	8	17	18	19	9	20	10	11
R			11	20	21	10	16												

(BOTTOM VIEW)



L1	RLF3C3-0
L2	RLQZP3R3KL-Y
L3	
L4	RLGZD10IK-Y
T1	RLI2AB-T
T2	2A22-M
CF1	RVFPFA455A
X1	RVCA4380NRW
X2	4400
X3	6510
X4	6570
X5	10050
X6	10215
TR1	EVLFAAA00A14

- NOTES.
- S1-1 ~ S1-2 : OFF - FIRST PRD - SECOND PRD SWITCH IN 'OFF' POSITION.
 - S2-1 ~ S2-2 : FREQUENCY SELECTOR SWITCH IN '3 MHz' POSITION.
 - ALL RESISTOR VALUE IN Ω ($K=10^3\Omega$)
 - ALL CAPASITOR VALUE IN μF ($P=10^{-6}\mu F$)
 - TOLERANCE OF RESISTOR IS $\pm 5\%$
 - TOLERANCE OF CAPASITOR IS:
 $N = \pm 30\%$, $M = \pm 20\%$, $K = \pm 10\%$, $J = \pm 5\%$.

Sym	Item or Code No.	Material & Size	at	Process		
④	⑤	⑥	⑦	Model R-026-J		
Scale	Designed	Drawn	Traced	Checked	Approved	Parts No.
T. Fukushima						Name
May 10 '85				T. Fukushima	S. Moucha	