

# NATIONAL R-122

TR<sub>1</sub>  
**2SA102**  
Conv.

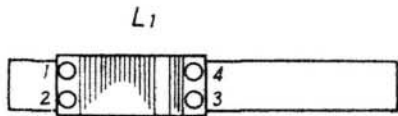
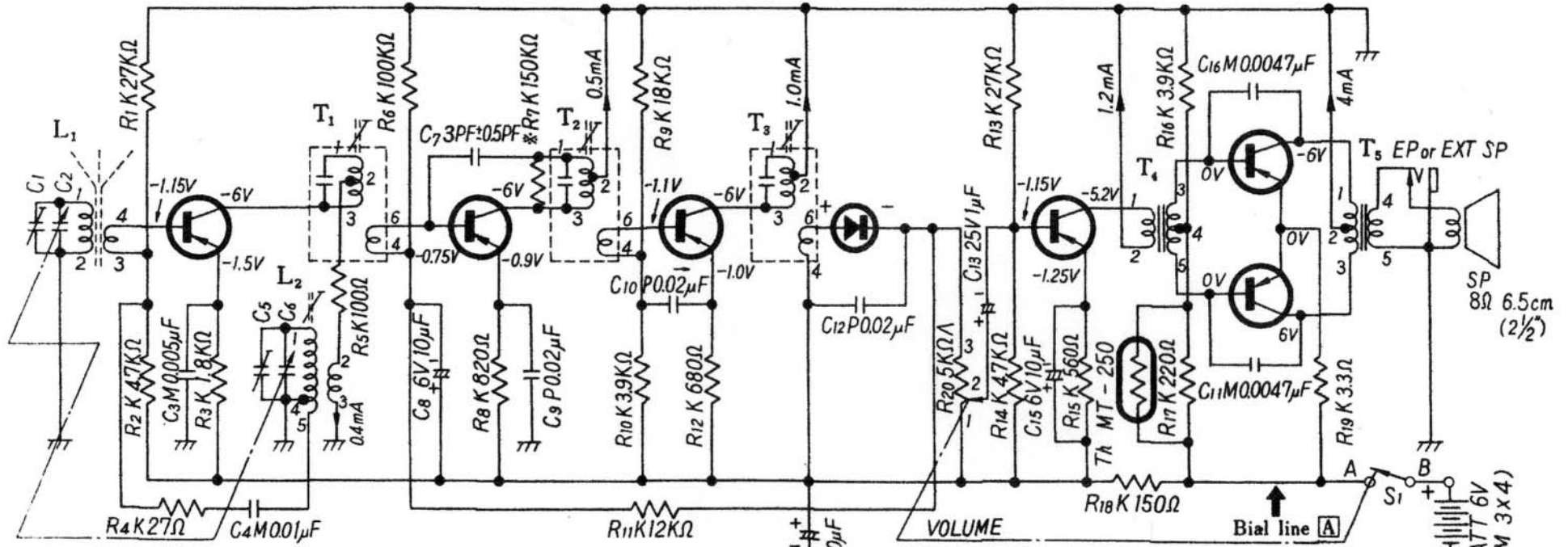
TR<sub>2</sub>  
**2SA101**  
1st IF Amp.

TR<sub>3</sub>  
**2SA101**  
2nd IF Amp. Det. & AGC

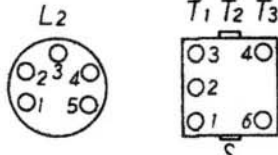
D<sub>1</sub>  
**0A90**

TR<sub>4</sub>  
**2SB175**  
AF Amp.

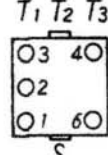
TR<sub>5</sub> & TR<sub>6</sub>  
**2SB172 × 2**  
Out put



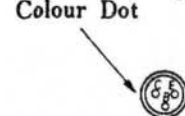
Antenna Coil



Oscillator Coil



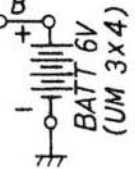
IF Transformer



Transistor

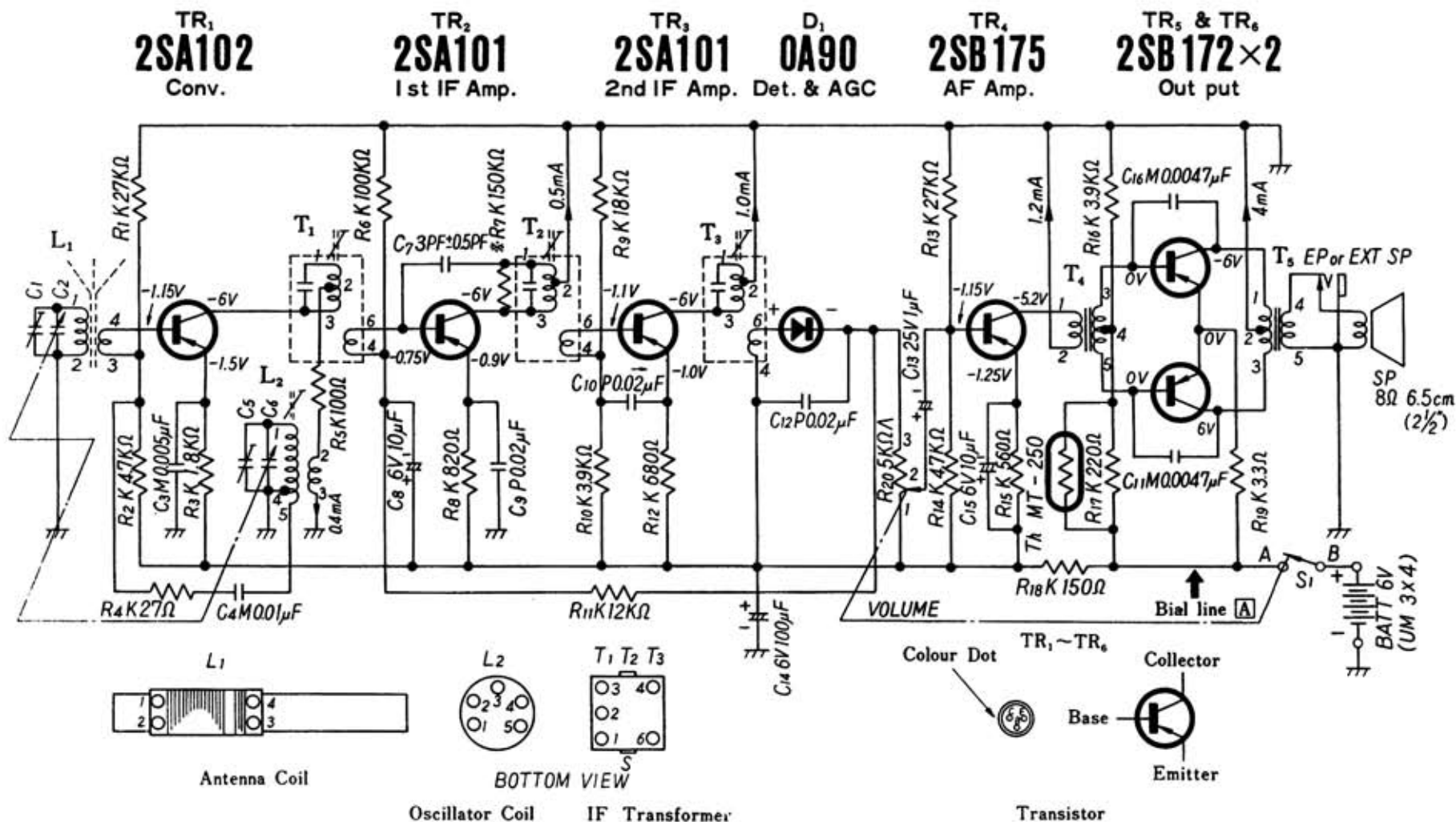


Transistor



BATT 6V (UM 3x4)

# NATIONAL MODEL R-122



- Notes:**
1. S<sub>1</sub> : Power source switch in "OFF" position.
  2. DC Voltage measurement are taken with circuit tester (10KΩ/V).
  3. Measured voltages for TR<sub>1-n</sub> are from transistor terminal to bias line [A].
  4. Capital letters (M, K, J, P) in the circuit diagram show allowable tolerance of resistors and capacitors as follows.  
 M = ±20%    K = ±10%    J = ±5%    P = ±100%

5. Battery current:    No signal    6~12mA  
                                  Maximum output    100mA
6. PF = pico farad = mmf  
    μF = micro fard = mfd
7. The resistor dotted in the diagram are the standard value which may be variable according to the characteristics of transistor.  
    \* R<sub>7</sub> = 220KΩ, 150KΩ