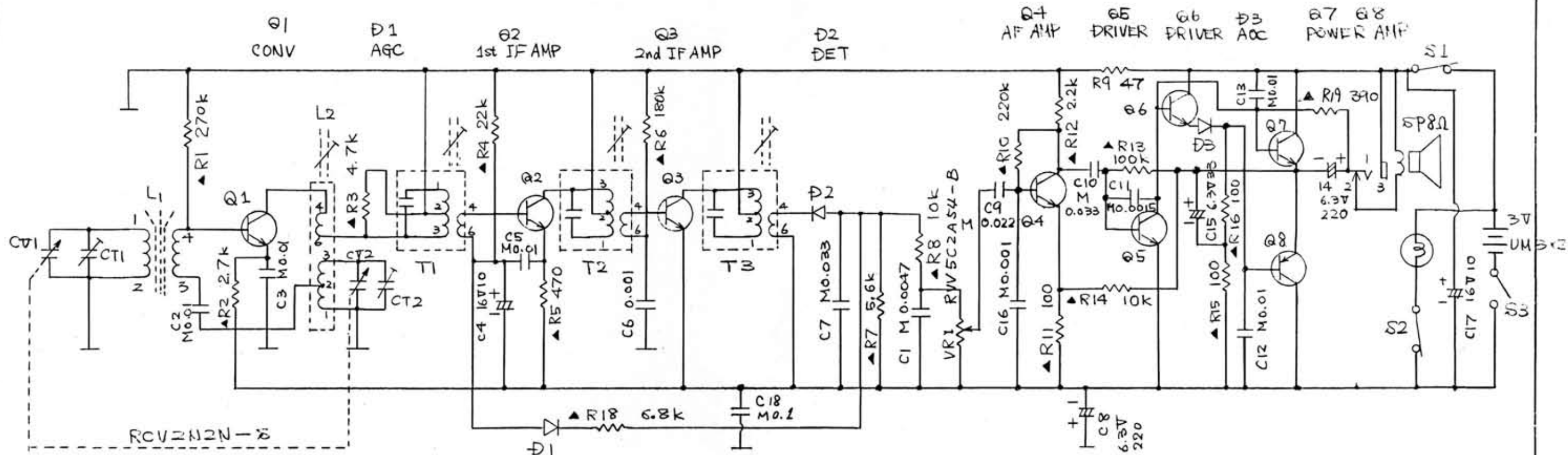


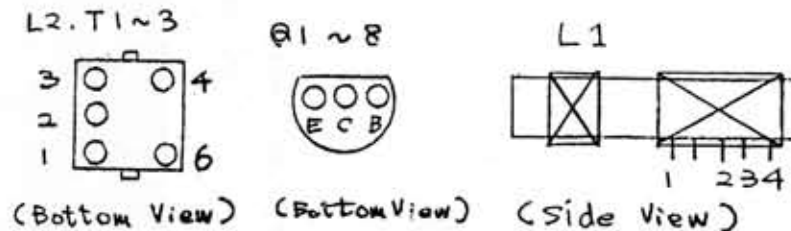
Sym	Date	Revision	Changed From	Signed	Checked	Approved



C	2	3	4	5	6	18	7	1	9	16	8	10	11	15	12,13	14	17		
R	1	2	3	4	5	18	6	7	8	10	11	12	9	14	13	15	16	17	19

L1	RLF 2J54-O
L2	RLO 2B98-A
T1, T2	RLI 2B157-A
T3	RLI 2B457-A
D1	MA150 FV
D2	DA90
D3	MA27B2

Q1	2SC829C
Q2	2SC829C
Q3	2SC829B
Q4	2SC945Q1
Q5	2SC945Q1
Q6	2SC945Q1
Q7	2SC2001 K2
Q8	2SA952 K2



NOTES
 TOLERANCE OF ▲ MARKING RESISTOR : ±10%
 TOLERANCE OF NO MARKING RESISTOR : ±5%
 TOLERANCE OF CAPACITORS : M=±20%
 ALL RESISTORS VALUES IN Ω (K=10³Ω)
 ALL CAPACITORS VALUES IN μF
 S1. RADIO SWITCH IN "ON" POSITION
 S2. LIGHT SWITCH IN "ON" POSITION
 S3. POWER SWITCH IN "OFF" POSITION

Designed					Drawn					Traced					Checked					Approved				
Jan 19 '82					Jan 19 '82					Jan 19 '82														
K. Hinata					K. Hinata					K. Hinata														
Model										R-61-(N)														
Parts No.										SCHEMATIC DIAGRAM														