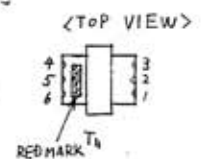
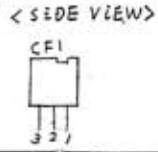
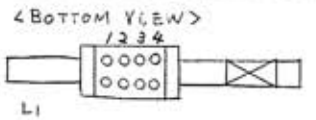


- NOTES**
- S<sub>1</sub> POWER SWITCH OFF POSITION INDICATED
  - S<sub>2</sub> SAVER SWITCH OFF POSITION INDICATED
  - ALL RESISTOR VALUES IN OHM (K=10<sup>3</sup>Ω)
  - ALL CAPACITOR VALUES IN MICRO FARAD (P=10<sup>-6</sup>µF)
  - TOLERANCE OF NO MARKING RESISTERS: ±5%
  - TOLERANCE OF ▲ MARKING RESISTERS: ±10%
  - TOLERANCE OF CAPACITORS: M=±20% Z=±20%
  - KIND OF RESISTERS
    - NO MARK: CARBON FILM RESISTERS
    - ▲ MARK: PRINTED RESISTERS
  - KIND OF CAPACITORS
    - NO MARK: CERAMIC CAPACITOR
    - ⊕ MARK: SEMICONDUCTIVE CAPACITOR



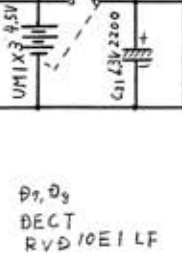
C	6	7	8	9	10	12	11	13	14	15	16	18	19	20	21	22	23	24	26	27	29	30	31								
R	1	2	3	4	5	7	8	9	10	11	12	14	15	16	17	18	19	20	21	22	23	24	25	26	27	28	29	30	31	32	33



Q<sub>8</sub> Thermal Compensation  
MA27B1

Q<sub>9</sub> DC AMP  
2SC945Q1

Q<sub>10</sub> DC AMP  
2SC945Q1 or Q2



Model	R-123-(V)				
Parts No.	SCHEMATIC DIAGRAM				
Designed	Drawn	Traced	Checked	Approved	
H. Tachimura	H. Tachimura	H. Tachimura	K. Komuro		
21. Mar. 16	21. Mar. 15	21. Mar. 14			