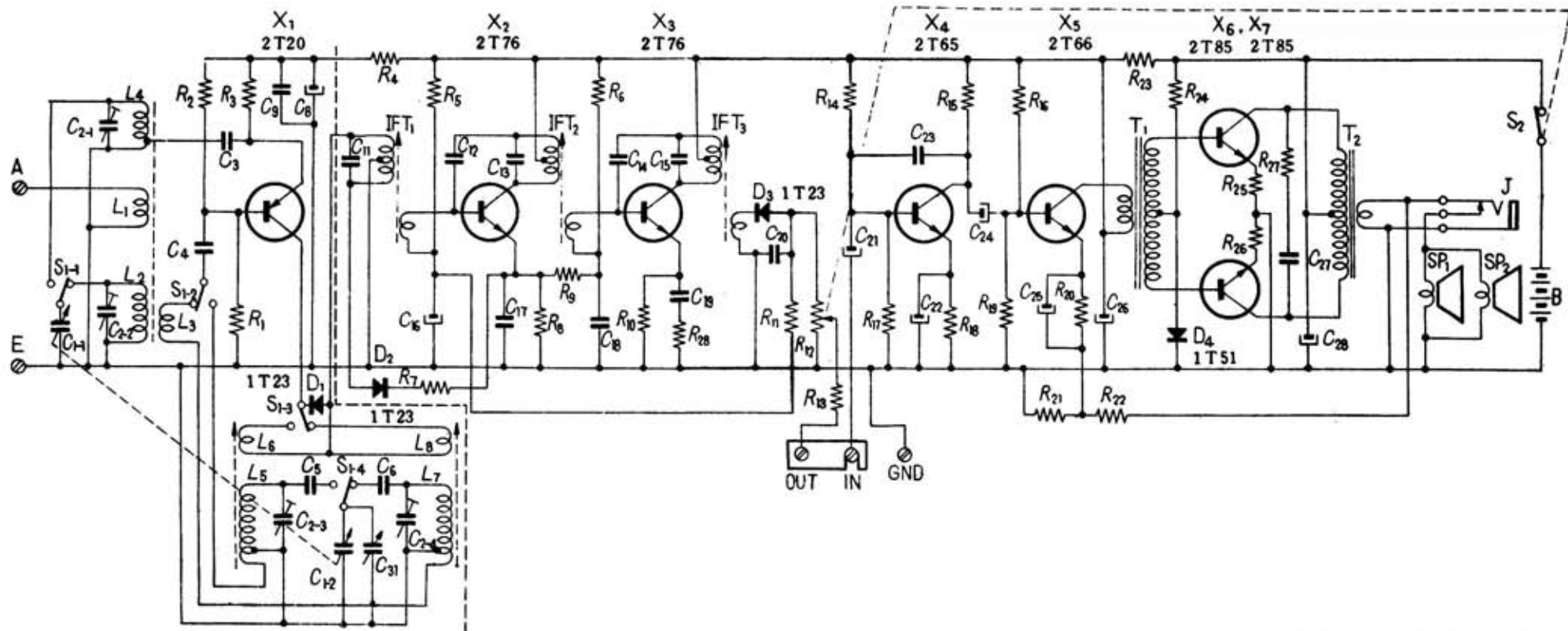


CIRCUIT DIAGRAM FOR TR-711



C ₁	Tuning Capacitor	C ₁₅	200 PF	C ₂₇	0.1 μF	R ₉	3.3 KΩ ± 5%	R ₂₁	5 Ω ± 5%
C ₂	2-15PF Gang Trimmer	C ₁₆	10 μF 3V	C ₂₈	100 μF 6V	R ₁₀	470 Ω	R ₂₂	82 Ω
C ₃	0.005 μF	C ₁₇	0.05 μF	C ₂₉	Midget Tuning Capacitor	R ₁₁	5.6 KΩ	R ₂₃	82 Ω
C ₄	0.01 μF	C ₁₈	0.05 μF			R ₁₂	5 KΩ VR with Switch	R ₂₄	2.7 KΩ
C ₅	3000 PF	C ₁₉	0.05 μF	R ₁	15 KΩ ± 5%	R ₁₃	470 Ω ± 5%	R ₂₅	5 Ω
C ₆	370 PF	C ₂₀	0.02 μF	R ₂	2.2 KΩ	R ₁₄	33 KΩ	R ₂₆	5 Ω
C ₇	30 μF 6V	C ₂₁	10 μF 3V	R ₃	1.5 KΩ	R ₁₅	1 KΩ	R ₂₇	60 Ω
C ₈	0.01 μF	C ₂₂	100 μF 3V	R ₄	82 Ω	R ₁₆	5.6 KΩ	R ₂₈	82 Ω
C ₉	0.01 μF	C ₂₃	0.01 μF	R ₅	68 KΩ	R ₁₇	5.6 KΩ		
C ₁₀	170 PF	C ₂₄	10 μF 3V	R ₆	33 KΩ	R ₁₈	470 Ω		
C ₁₁	2 PF	C ₂₅	100 μF 3V	R ₇	470 Ω	R ₁₉	3.3 KΩ		
C ₁₂	200 PF	C ₂₆	100 μF 6V	R ₈	470 Ω	R ₂₀	330 Ω		
C ₁₃	2 μF								

C_{7, 10, 29, 30}
Note: C_{7, 10, 29, 30} Not in use

SONY CIRCUIT DIAGRAM

TR-711

