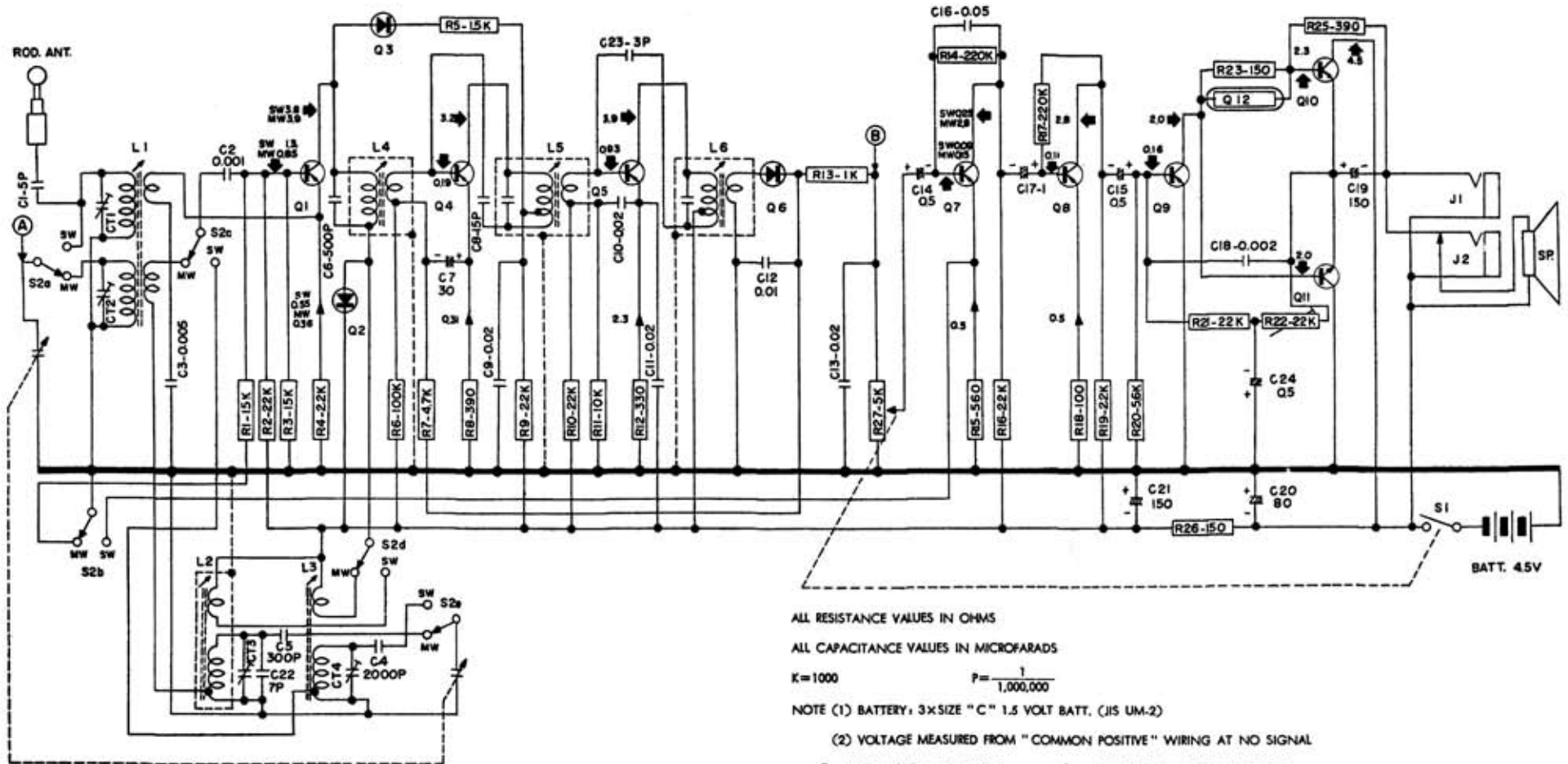


STANDARD SR-H740

SCHEMATIC DIAGRAM

Q1 2SA268 CONV. Q2 1S446 OSC COMP. Q3 1S446 AGC COMP. Q4 2SA31 IF-1ST Q5 2SA269 IF-2ND Q6 1S446 DET. Q7 2SB32 AF-1ST Q8 2SB32 AF-2ND Q9 2SB33 AF-3RD Q10 2SB33 OUTPUT Q11 2SD33 OUTPUT Q12 MT-170 TEMP. COMP.



ALL RESISTANCE VALUES IN OHMS

ALL CAPACITANCE VALUES IN MICROFARADS

K=1000

$$P = \frac{1}{1,000,000}$$

NOTE (1) BATTERY, 3xSIZE "C" 1.5 VOLT BATT. (JIS UM-2)

(2) VOLTAGE MEASURED FROM "COMMON POSITIVE" WIRING AT NO SIGNAL

↓: VOLTAGE (VOLTS)

↑: CURRENT (MILLIAMPERES)



STANDARD SERVICE DATA

S R-H740

